

# KANSAS WILDFIRE RISK EXPLORER

# Area of Interest Summary Report

Ellis



Report was generated using <https://kansaswildfirerisk.org>  
Report generated: 10/12/2023

# Table of Contents

- Disclaimer
- Introduction
- Wildfire Risk
- Wildfire Effects
- Combined Value Impacts
- Wildland Urban Interface
- Fire Occurrence Density
- Fire History Statistics
- Appendix
- References

*To navigate to a specific section of the report, press the Ctrl key and click on the section title.*

**Citation:**

Kansas Forest Service. 2023. Kansas Area of Interest Summary Report [Computer Application]. Retrieved from <https://kansaswildfirerisk.org>

## Disclaimer

The information contained herein is provided as a public service and is for NON-COMMERCIAL, INFORMATIONAL PURPOSES ONLY, with the understanding that THE INFORMATION IS BEING PROVIDED "AS IS" AND WITHOUT WARRANTY OF ANY KIND EITHER EXPRESS, IMPLIED, OR STATUTORY, INCLUDING BUT NOT LIMITED TO IMPLIED WARRANTIES OF MERCHANTABILITY AND FITNESS FOR A PARTICULAR PURPOSE. The information provided does not constitute legal advice.

The Kansas Forest Service; the Western Forestry Leadership Coalition; and the Council of Western State Foresters (collectively "the providers") do not warrant, either expressed or implied, the accuracy, completeness, reliability, or suitability of the information. Nor do the providers warrant that the use of this information is free of any claims of copyright infringement. Property boundaries included in any product do not represent an on-the-ground survey suitable for legal, engineering, or surveying purposes. They represent only the approximate relative locations.

By accessing this website and/or data contained within the databases, you agree to use all information at your own risk and you hereby release the providers and their employees, agents, contractors, and suppliers from any and all responsibility and liability associated with your use. In no event shall the providers be liable for any damages arising in any way out of the use of the products or website, or use of the information contained in the databases including, but not limited to, the Western Wildfire Risk Assessment, and products published or derived from these data.

The user agrees to assume the entire responsibility and liability related to the use of this information, including, but not limited to the Western Wildfire Risk Assessment, and products published or derived from these data.

IN NO EVENT WILL THE PROVIDERS BE LIABLE TO YOU OR TO ANY THIRD PARTY FOR ANY DIRECT, INDIRECT, INCIDENTAL, CONSEQUENTIAL, SPECIAL OR EXEMPLARY DAMAGES OR LOST PROFIT RESULTING FROM ANY USE OR MISUSE OF THESE DATA, EVEN IF THE USER HAS BEEN ADVISED OF THE POSSIBILITY OF SUCH DAMAGE.

# Introduction

## Kansas Area of Interest Summary Report

The Area of Interest tool allows users of the Advanced Viewer to define a specific area to further explore components of its wildfire risk. This report has been generated explicitly for your defined Area of Interest, providing a detailed summary of each data layer which makes up the assessment. The layers for many of these map products were created with publicly available datasets and information provided by the Kansas Forest Service. To access all data layers for this Area of Interest as a GIS file, use the tool's feature to "export data as a .zip file" after defining an area.



This report was designed so that information can be copied and pasted into other plans, reports, or documents depending on user needs. Examples include, but are not limited to Community Wildfire Protection Plans, Local Fire Plans, Fuels Mitigation Plans, Hazard Mitigation Plans, and Homeowner Risk Assessments.

The Kansas Wildfire Risk Assessment provides a consistent, comparable set of scientific results to be used as a foundation for wildfire mitigation and prevention planning in the state of Kansas.

Results of an assessment can be used to help prioritize areas in the state where mitigation treatments, community interaction, education, or tactical analyses might be necessary to reduce risk from wildfires.

The Kansas Wildfire Risk Explorer's map products and descriptions included in this summary report are designed to provide the information needed in support of the following key priorities:

- Identify areas most prone to wildfire.
- Plan and prioritize fuel treatments.
- Define priorities and improve emergency response across jurisdictional boundaries.
- Increase communication with residents to address community needs and priorities.
- Identify areas where additional tactical planning may be needed, especially regarding mitigation projects and Community Wildfire Protection Planning.
- Provide robust data to support resource, budget, and funding requests.
- Plan for response and wildfire suppression resource needs.



## Graphs Products and Descriptions

Each graph product in this Summary Report is accompanied by a general description, table, chart, or map. Please see the table below for a list of data layers available in the Summary Report.

Data Layer	Description
<b>Wildfire Risk</b>	Wildfire Risk represents the possibility of loss or harm occurring from a wildfire and is displayed in the Kansas Wildfire Risk Assessment Portal (KSWRAP) by the Wildfire Risk.
<b>Wildfire Effects</b>	The Wildfire Effects identifies areas with important values that could be adversely impacted by a wildfire and where fire suppression activities may be difficult. The Wildfire Effects is developed using two inputs: Combined Value Impacts and Suppression Difficulty.
<b>Combined Value Impacts</b>	The Combined Value Impacts is defined by the Value Impacts Rating (VIR) from the West Wide Assessment. The VIR is a collective value that represents adverse impacts by wildfire. The Value Impacts Rating (VIR) is an overall rating based on the Wildland Development Areas (WUI), Forest Assets, Riparian Assets, Drinking Water Importance Areas and Infrastructure Assets. The individual Value Impacted Categories are based on a scale of 0 to 5. This indicates a negative impact to a defined value from a wildfire.
<b>Wildland Urban Interface</b>	A Wildland Urban Interface (WUI) is described as an area where structures and other human improvements meet and intermingle with wildland or vegetative fuels. The WUI data set defines areas where people and homes are threatened by fire burning in wildland fuels.
<b>Fire Occurrence Density</b>	The Fire Occurrence Density map represents the likelihood of a wildfire igniting based on historical ignition patterns.
<b>Fire History Statistics</b>	Fire History Statistics provide insight as to the number of fires and cause of fires, and are useful for fire prevention and mitigation planning.

# Wildfire Risk

## Description

**Wildfire Risk represents the possibility of loss or harm occurring from a wildfire and is displayed in the Kansas WRA (Wildfire Risk Assessment) by the Wildfire Risk.**

It is a primary output of the Kansas Wildfire Risk Assessment (Kansas WRA). Wildfire Risk combines the likelihood of a fire occurring (Fire Threat), with those areas of most concern that are adversely impacted by fire (Fire Effects), to derive a single overall measure called the Wildfire Risk. It identifies areas with the greatest potential impacts from a wildfire considering the likelihood of an area burning and the impacts to values and assets aggregated together.

Since all areas in Kansas have the Wildfire Risk calculated consistently, it allows for comparison and ordination of areas across the entire state. Fire Threat is a measure that has been calculated which is closely related to the likelihood of an area burning. It is mapped as the Fire Threat in the Kansas WRA.

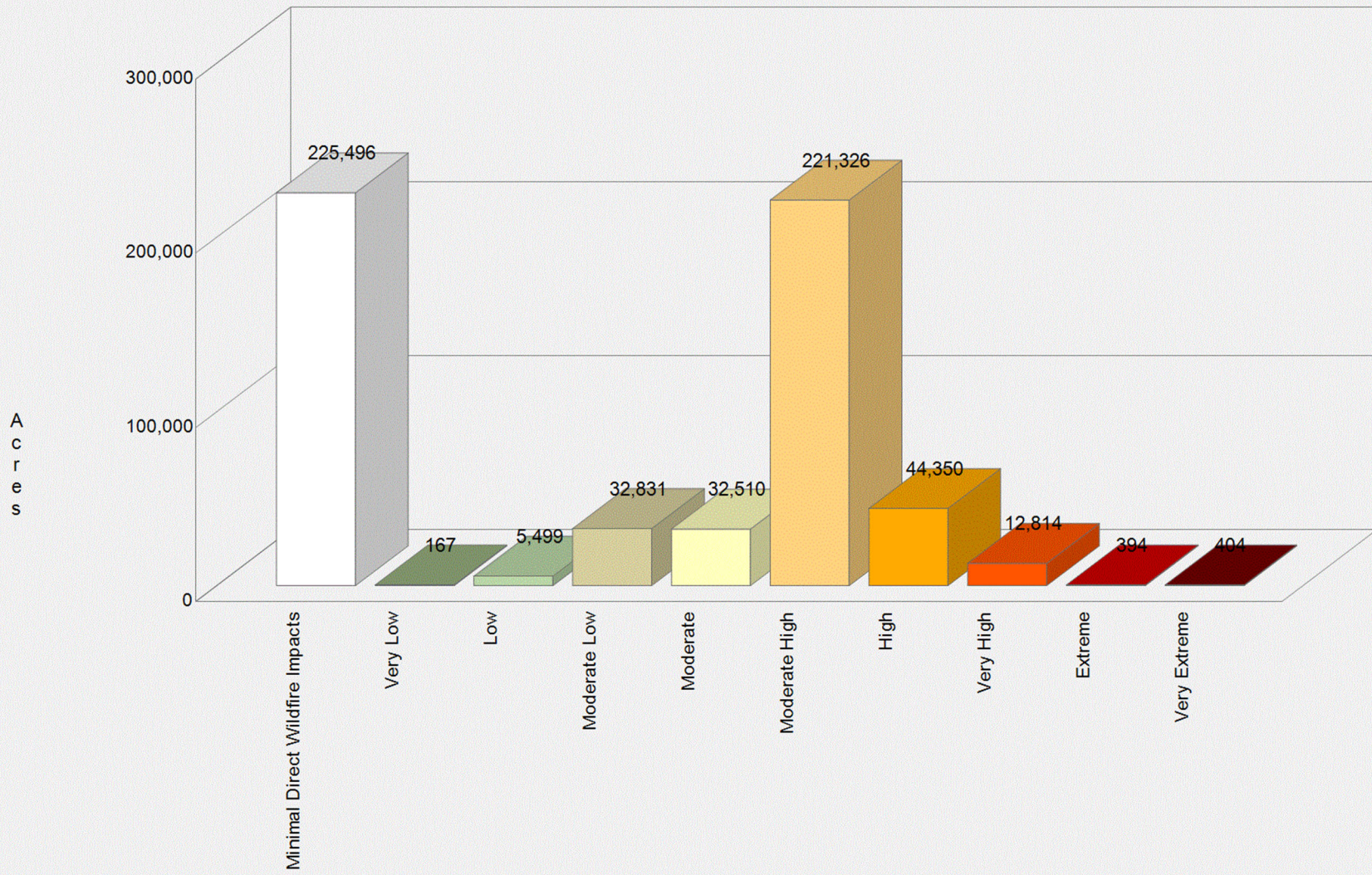
Fire Effects are comprised of two inputs: Value Impacts and Suppression Difficulty. The Fire Effects identifies those areas that have important values that could be adversely impacted by a wildfire and might be in areas where fire suppression activities are difficult. The Values Impacted defined in the Kansas WRA include Wildland Development Areas (WUI), Forest Assets, Riparian Assets, Drinking Water Importance Areas (watersheds) and Infrastructure Assets. Refer to each Values Impacted description for more information about these values.

To aid in the use of Wildfire Risk for planning activities, the output values are categorized into nine (9) categories. These are given general descriptions from Very Low to Very Extreme Wildfire Risk.

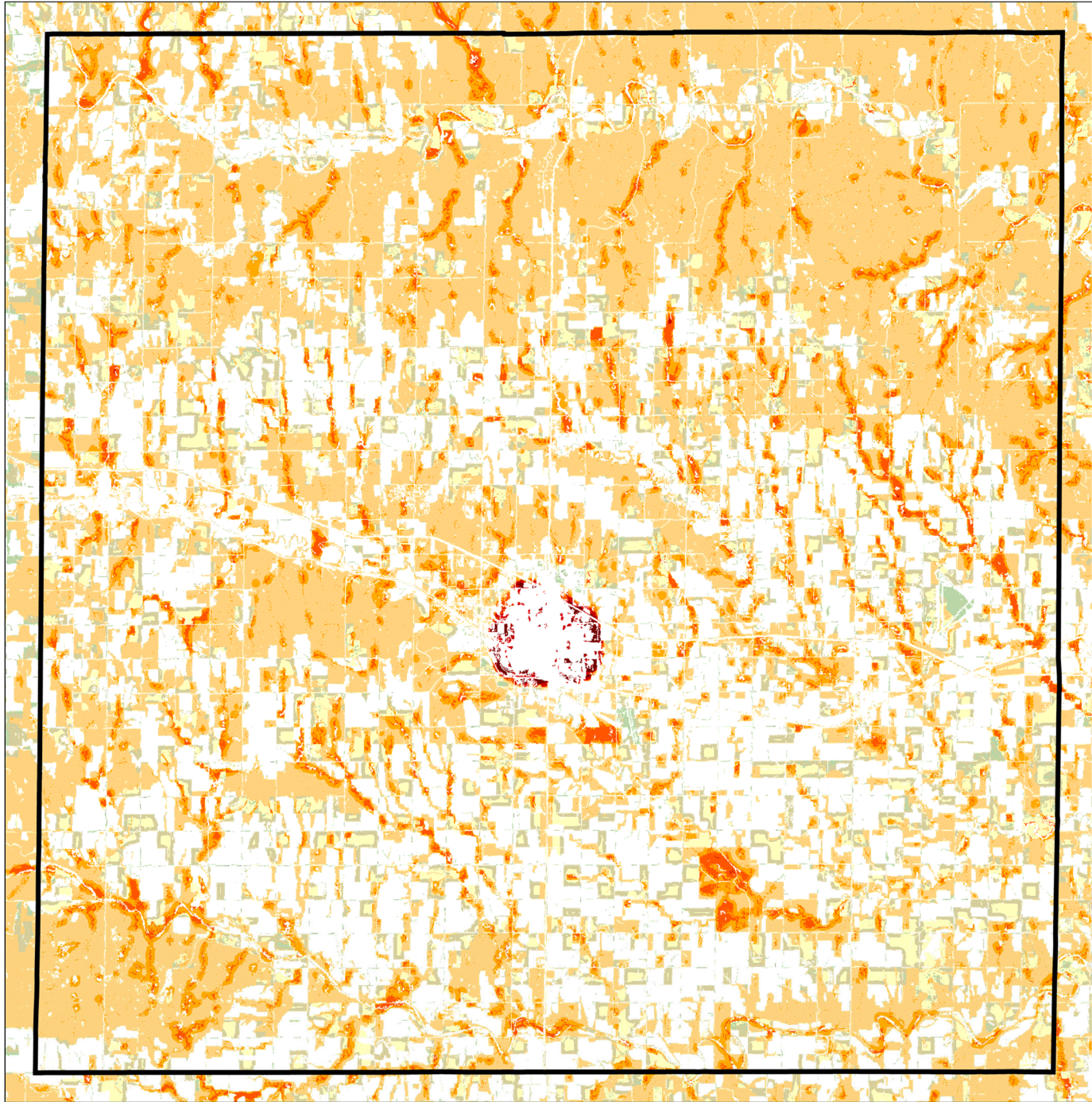
	Wildfire Risk Category	Acres	Percent
	Minimal Direct Wildfire Impacts	225,496	39.2 %
	Very Low	167	0.0 %
	Low	5,499	1.0 %
	Moderate Low	32,831	5.7 %
	Moderate	32,510	5.6 %
	Moderate High	221,326	38.4 %
	High	44,350	7.7 %
	Very High	12,814	2.2 %
	Extreme	394	0.1 %
	Very Extreme	404	0.1 %
	<b>Total</b>	<b>575,791</b>	<b>100.0 %</b>



## Ellis Wildfire Risk







## Ellis

### Wildfire Risk

- Minimal Direct Wildfire Impacts
- Very Low
- Low
- Moderate Low
- Moderate
- Moderate High
- High
- Very High
- Extreme
- Very Extreme

6.99 mi  
14997.1 m



Kansas Wildfire Risk Assessment  
kansaswildfirerisk.org



# Wildfire Effects

## Description

The Wildfire Effects identifies areas with important values that could be adversely impacted by a wildfire and where fire suppression activities may be difficult. The Wildfire Effects is developed using two inputs: Combined Value Impacts and Suppression Difficulty.

The Combined Value Impacts is defined by the Value Impacts Rating (VIR) from the West-Wide Assessment. The VIR is a collective value representing adverse impacts by a wildfire based on the impacts to all five defined Values Impacted. The Value Impacts Rating (VIR) is an overall rating based on the five Values Impacted: Wildland Development Areas (WUI), Forest Assets, Riparian Assets, Drinking Water Importance Areas and Infrastructure Scores. The individual Value Impacted Categories are based on a scale of 1 to 9 and were derived for each of the Values Impacted using Response Function Scores.

The Suppression Difficulty data layer reflects the difficulty or relative cost of suppressing a fire given the terrain and vegetation conditions. This layer is an overall index that combines the slope steepness and the fuel type characterization to identify areas where it would be difficult or costly to suppress a fire due to the underlying terrain and vegetation.

To aid in the use of Wildfire Effects for planning activities, the output values are categorized into nine (9) categories. These are given general descriptions from Very Low to Very Extreme Wildfire Effect.

Since all areas in Kansas have Wildfire Effects calculated consistently, it allows for comparison and ordination of areas across

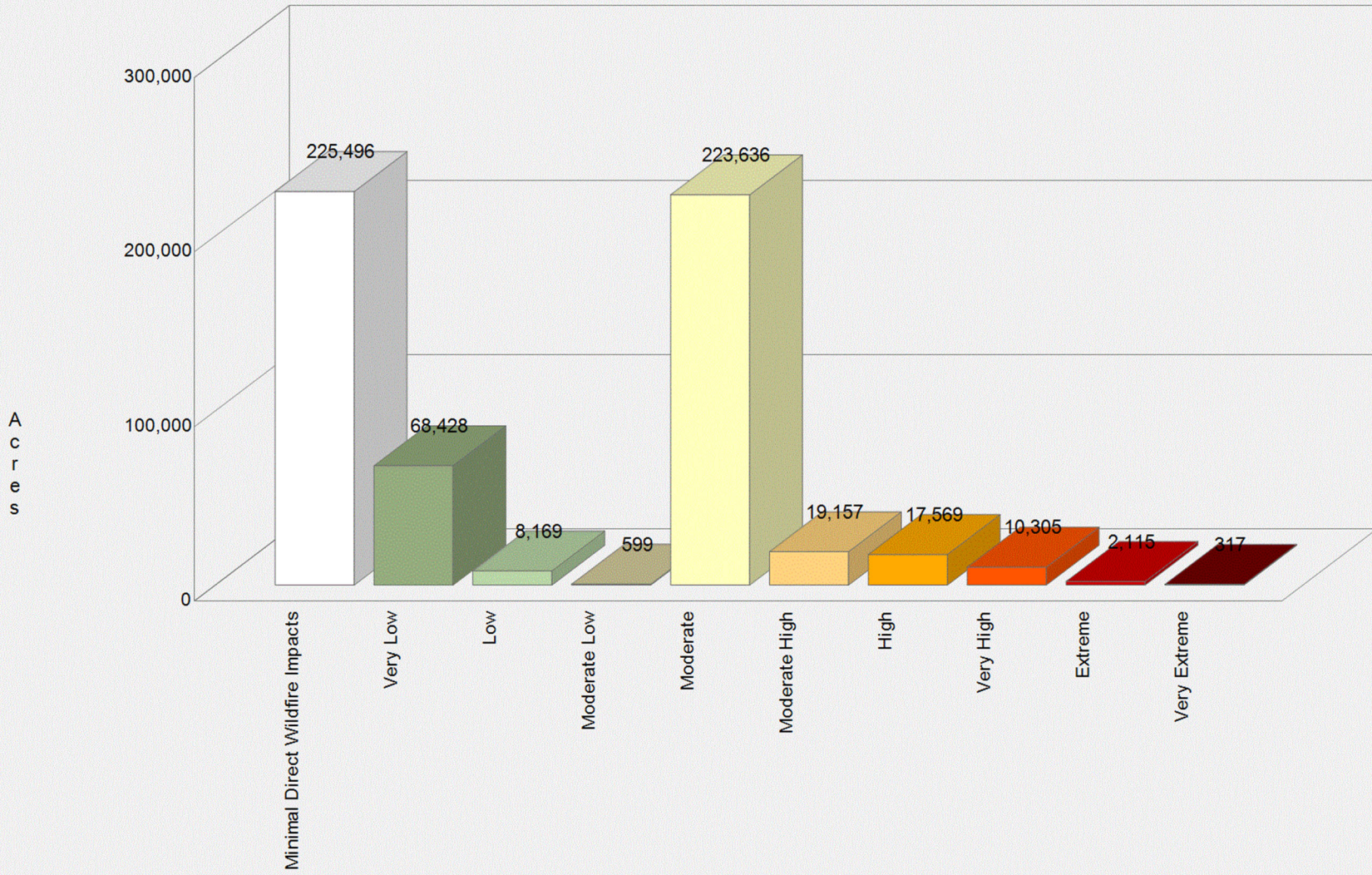
the entire state. For example, a high effects area in Eastern Kansas is equivalent to a high effects area in Western Kansas.

The Wildfire Effects is derived at a 30-meter resolution. This scale of data was chosen to be consistent with the accuracy of the primary surface fuels dataset used in the assessment. With care, it can be used for site specific analysis and regional, county or local protection mitigation or prevention planning.

	Wildfire Effects Category	Acres	Percent
	Minimal Direct Wildfire Impacts	225,496	39.2 %
	Very Low	68,428	11.9 %
	Low	8,169	1.4 %
	Moderate Low	599	0.1 %
	Moderate	223,636	38.8 %
	Moderate High	19,157	3.3 %
	High	17,569	3.1 %
	Very High	10,305	1.8 %
	Extreme	2,115	0.4 %
	Very Extreme	317	0.1 %
	<b>Total</b>	<b>575,791</b>	<b>100.0 %</b>



### Ellis Wildfire Effects





# Combined Value Impacts

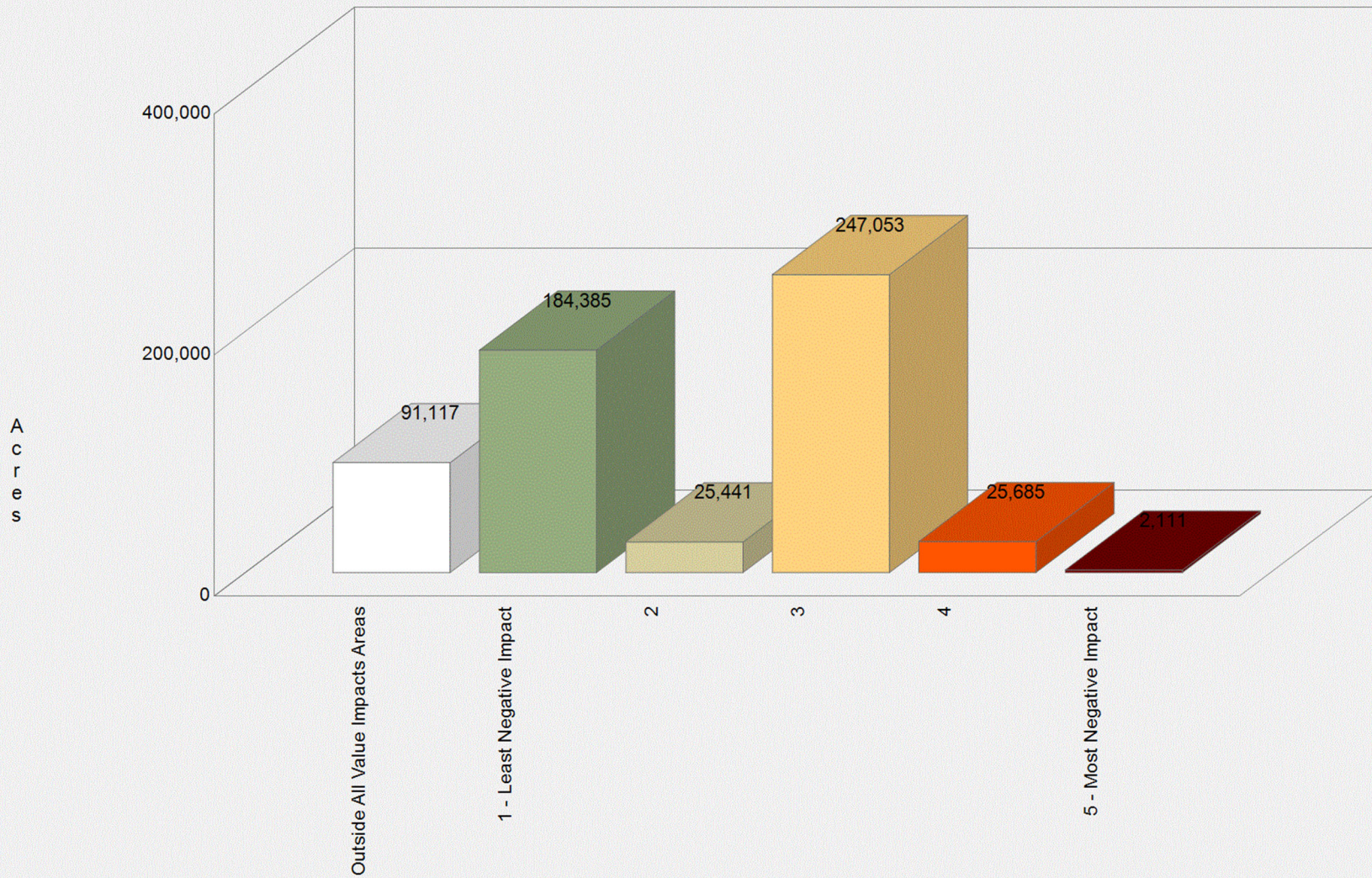
## Description

The Combined Value Impacts is defined by the Value Impacts Rating (VIR) from the West Wide Assessment. The VIR is a collective value that represents adverse impacts by wildfire. The Value Impacts Rating (VIR) is an overall rating based on the Wildland Development Areas (WUI), Forest Assets, Riparian Assets, Drinking Water Importance Areas and Infrastructure Assets. The individual Value Impacted Categories are based on a scale of 0 to 5. This indicates a negative impact to a defined value from a wildfire.

	Combined Value Impacts Category	Acres	Percent
	Outside All Value Impacts Areas	91,117	15.8 %
	1 - Least Negative Impact	184,385	32.0 %
	2	25,441	4.4 %
	3	247,053	42.9 %
	4	25,685	4.5 %
	5 - Most Negative Impact	2,111	0.4 %
	<b>Total</b>	<b>575,792</b>	<b>100.0 %</b>



### Ellis Combined Value Impacts





# Wildland Urban Interface

## Description

An increase in population across the state will impact counties and communities that are located within the Wildland Urban Interface (WUI). The WUI is described as an area where structures and other human improvements meet and intermingle with wildland or vegetative fuels. The WUI data set defines areas where people and homes are threatened by fire burning in wildland fuels. Population growth within these areas substantially increases the threat from wildfire.

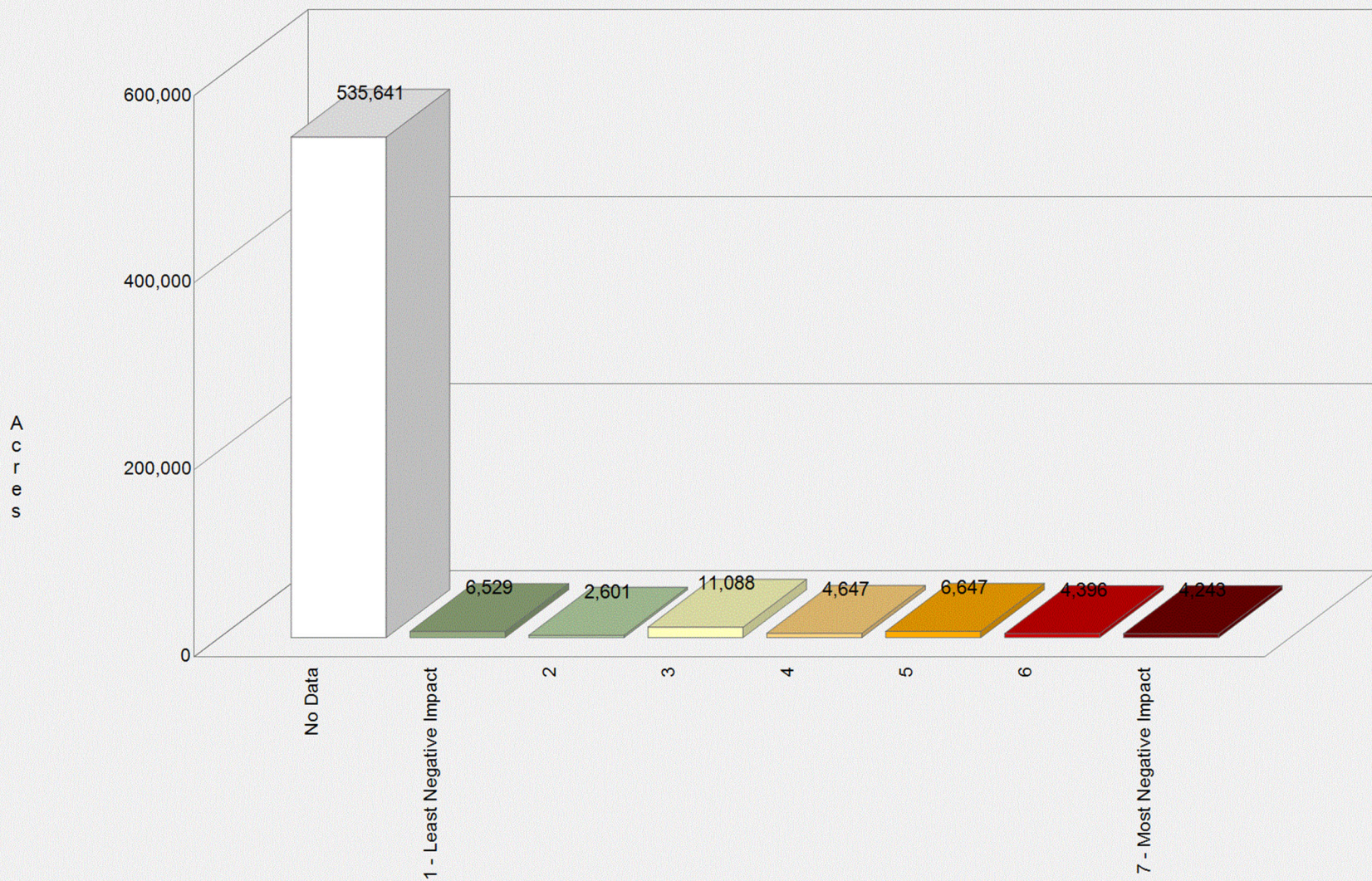
**The WUI layer reflects housing density depicting where humans and their structures meet or intermix with wildland fuels.** In the past, conventional interface data sets, such as U.S. Forest Service developed SILVIS data layer, have been used to reflect these concerns. However, the SILVIS data layer and other existing data sources did not provide the level of detail needed by the Kansas Forest Service and local fire protection agencies. The WUI data set is derived using modeling techniques based on the Where People Live data set and population count data available to government agencies from the Department of Homeland Security. The LandScan (2009) data obtained from the Department of Homeland Security was used to develop the Where People Live (WPL) data set. The Wildland Development Area (WDA) data set was developed from the Where People Live (WPL) data set by identifying areas that may be impacted by fire burning in wildland fuels.

The areas removed from the WPL data set are not expected to be directly impacted by fire burning in wildland fuels. Data is modeled at a 30-meter cell resolution, which is consistent with other Kansas WRA layers. The Wildland Urban Interface classes are based on the number of houses per acre. Class breaks are based on densities understood and commonly used in fire protection planning.

	Wildland Urban Interface Category	Acres	Percent
	No Data	535,641	93.0 %
	1 - Least Negative Impact	6,529	1.1 %
	2	2,601	0.5 %
	3	11,088	1.9 %
	4	4,647	0.8 %
	5	6,647	1.2 %
	6	4,396	0.8 %
	7 - Most Negative Impact	4,243	0.7 %
	<b>Total</b>	<b>575,792</b>	<b>100.0 %</b>



### Ellis Wildland Urban Interfaces





# Fire Occurrence Density

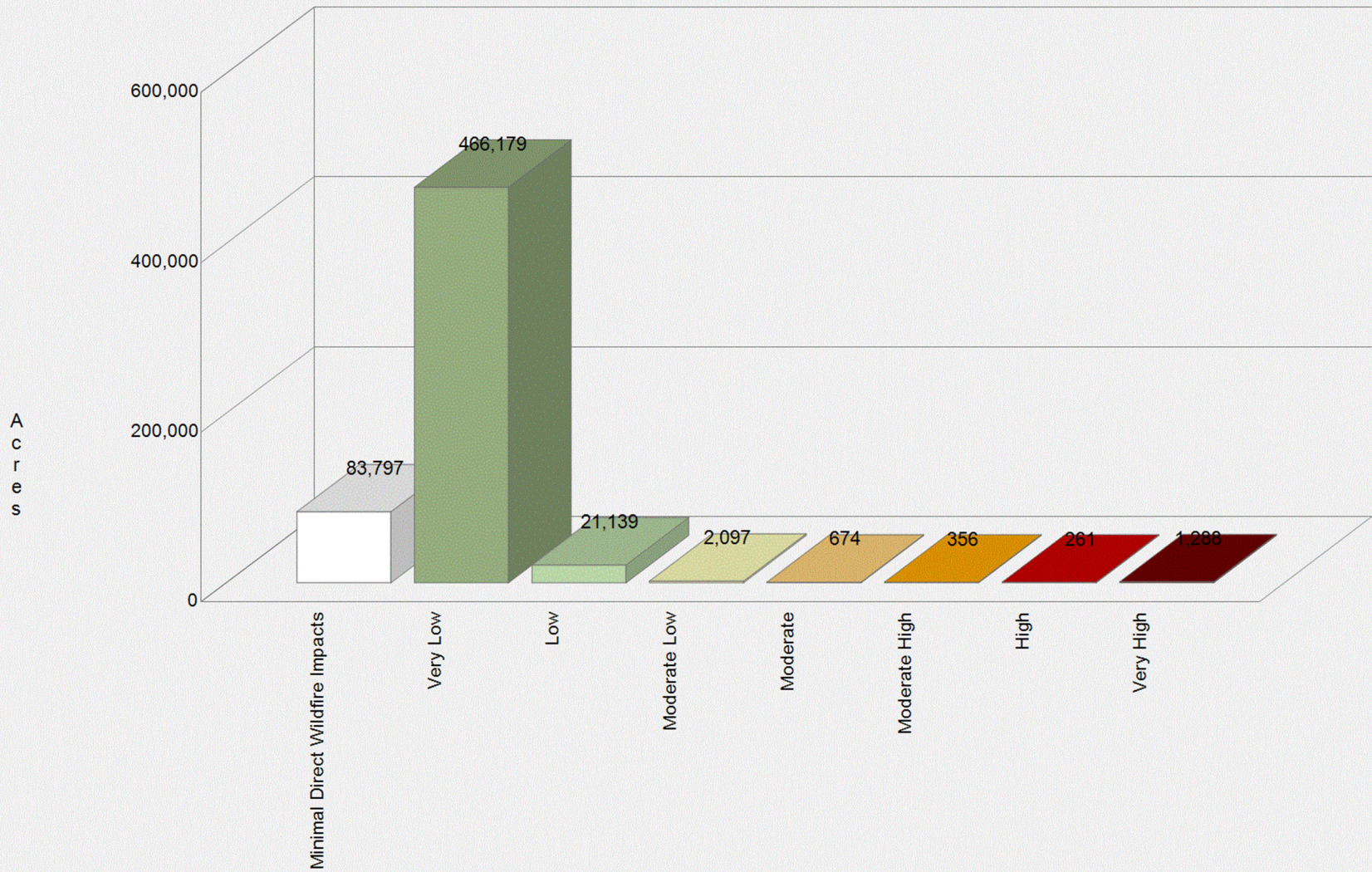
## Description

The Fire Occurrence Density map represents the likelihood of a wildfire igniting based on historical ignitions patterns. Occurrence is derived by modeling historic wildfire ignition locations to create an ignition density map. The ignition rate is measured in the number of fires per 1,000 acres per year. Caution, it is important to not view this as a probability, but as an ignition rate or frequency. Historic fire report data for the period 2010-2019 was used for ignitions with a defined location (latitude and longitude). The compiled fire occurrence database was examined to remove duplicate records. The database was modeled to create a fire occurrence density map reflecting historical fire ignition rates. The measure of fire occurrence used in the Kansas Wildfire Risk Explorer is called Fire Occurrence Density. Fire occurrence is a key input in the calculation of wildfire threat. Many Kansas wildfires are human caused, so a repeatable spatial pattern of ignitions develop over time. This pattern identifies areas where wildfires are most likely to ignite and fire prevention and education efforts can be planned accordingly.

	Fire Occurrence Density Category	Acres	Percent
	Minimal Direct Wildfire Impacts	83,797	14.6 %
	Very Low	466,179	81.0 %
	Low	21,139	3.7 %
	Moderate Low	2,097	0.4 %
	Moderate	674	0.1 %
	Moderate High	356	0.1 %
	High	261	0.0 %
	Very High	1,288	0.2 %
	<b>Total</b>	<b>575,791</b>	<b>100.0 %</b>



### Ellis Fire Occurrence Density





# Fire History Statistics

## Description

**Fire History Statistics provide insight as to the number of fires and cause of fires in Kansas.** These statistics are useful for fire prevention and mitigation planning. They can be used to quantify the level of fire business, determine the time of year most fires typically occur and develop a fire prevention program aimed at reducing the fire occurrence rate based on specific fire cause information.

Ten years of historic fire report data where fires had a specific defined location were used to create the fire occurrence summary charts. Wildfire Ignition data was compiled from federal and state sources for the years 2010-2019.

Federal and state provided wildfire ignition data was spatially referenced by latitude and longitude coordinates. All ignition references were updated to remove duplicate records.

Federal agency wildfire ignitions are symbolized by the cause of fire. Fire reports were gathered from the following federal data sources:

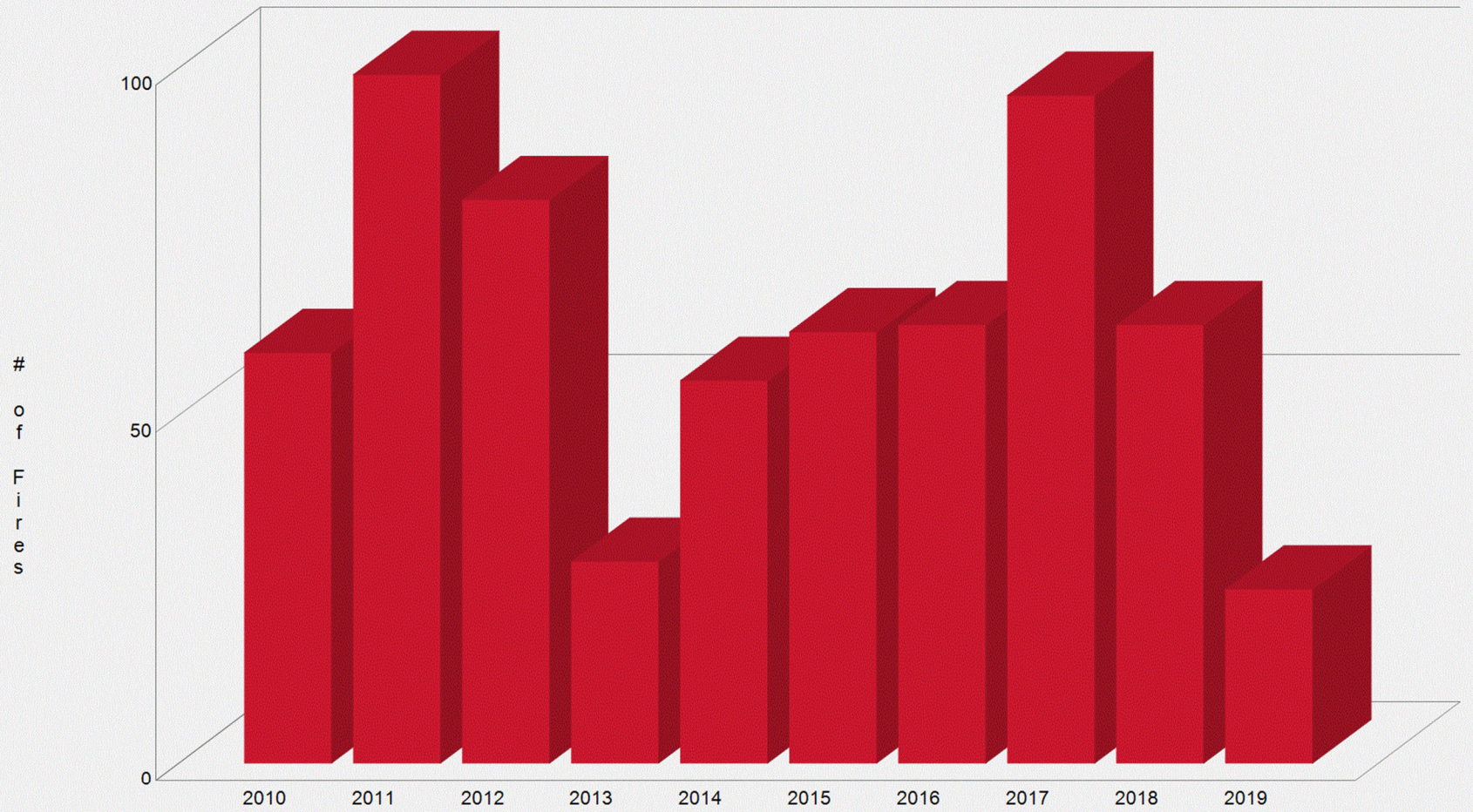
- Dept. of Agriculture U.S. Forest Service
- Dept. of Interior U.S. Fish and Wildlife Service
- Dept. of Interior Bureau of Indian Affairs
- Dept. of Interior National Park Service

State and local wildfire ignitions were gathered from fire department reports submitted by:

- Kansas Forest Service
- Volunteer Fire Departments
- Combination Fire Departments (paid and volunteer)
- Paid Fire Departments



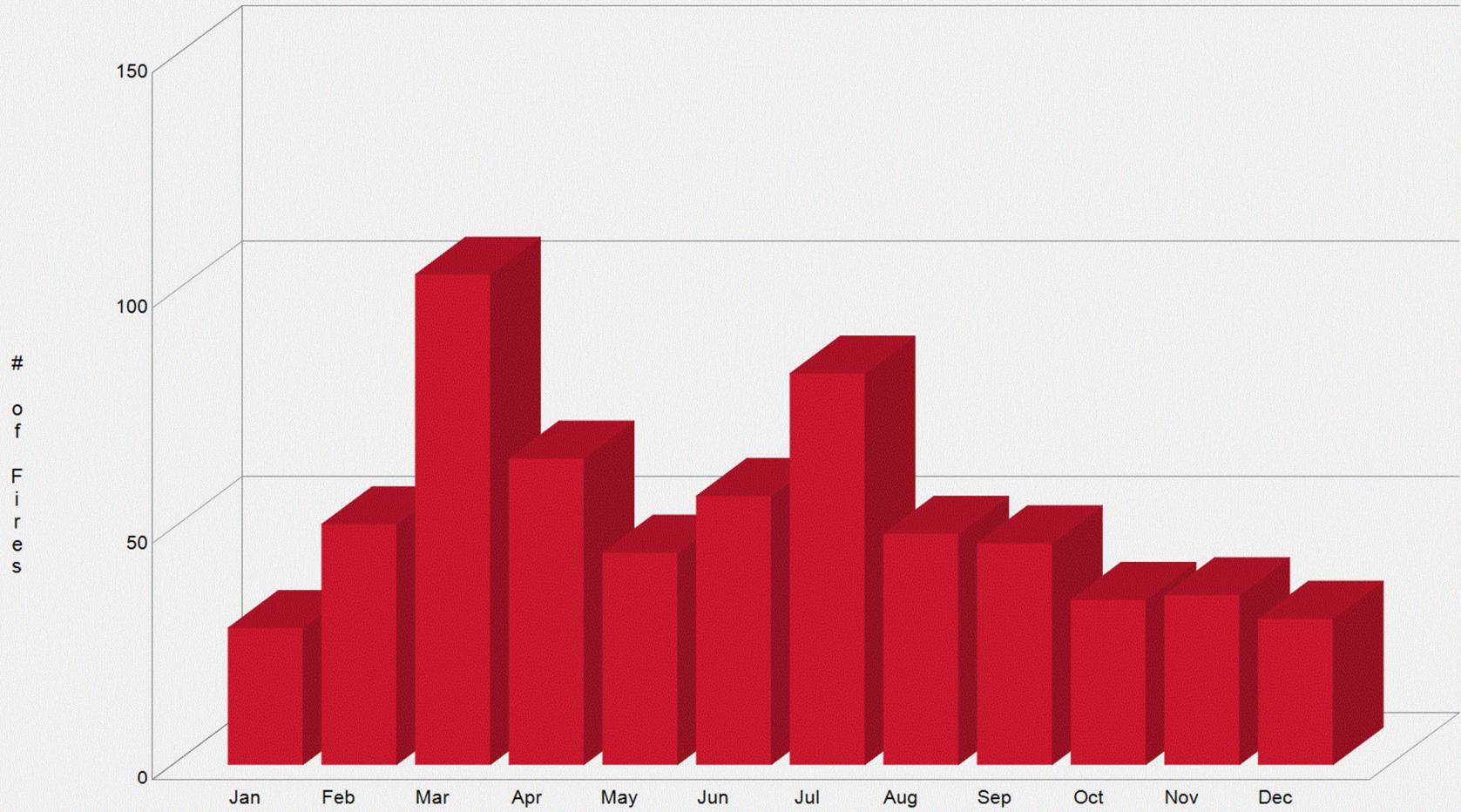
Ellis  
**Number of Fires by Year  
 2010 – 2019**



	2010	2011	2012	2013	2014	2015	2016	2017	2018	2019
# of Fires	59	99	81	29	55	62	63	96	63	25



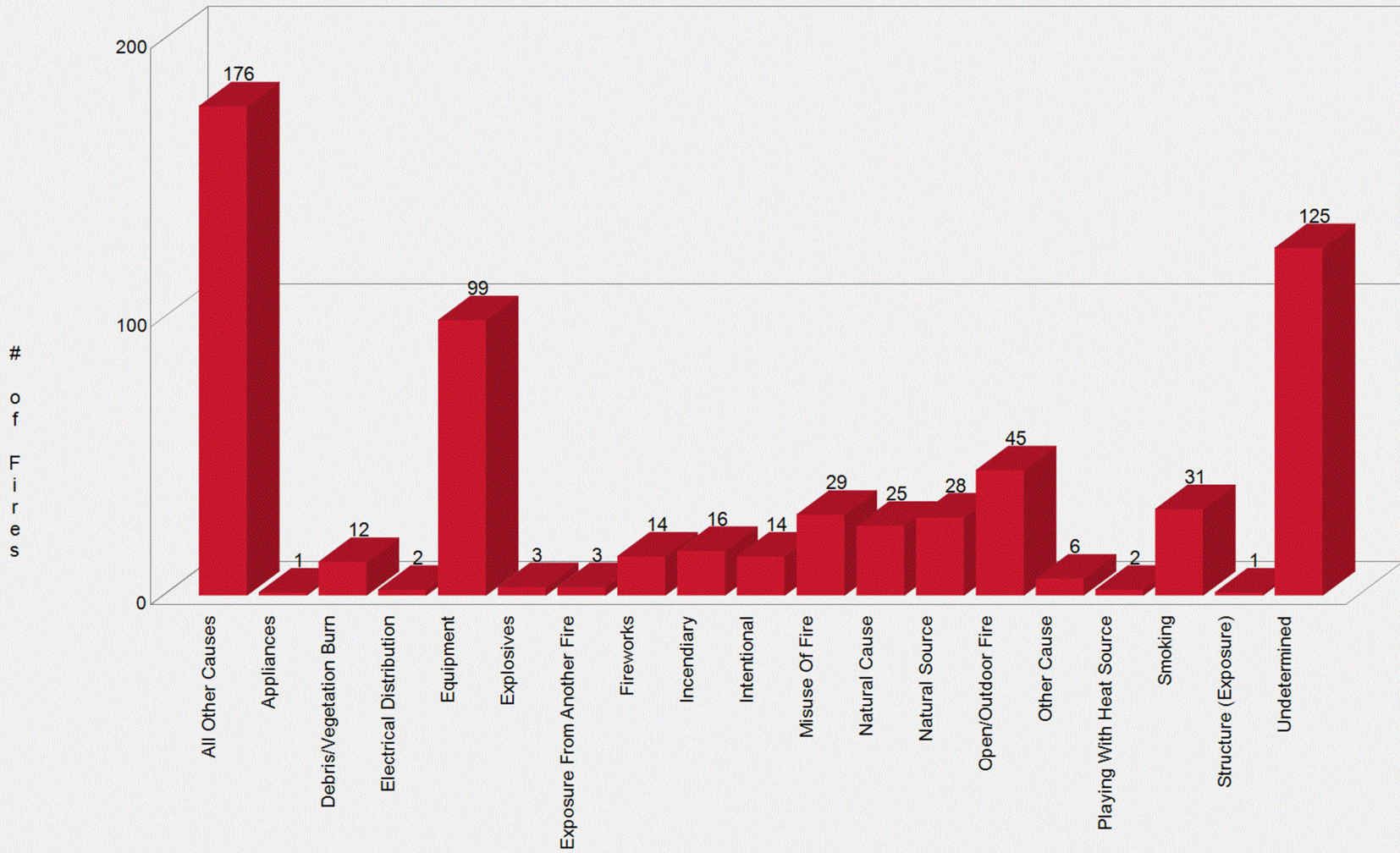
Ellis  
**Number of Fires by Month  
 2010 – 2019**



	Jan	Feb	Mar	Apr	May	Jun	Jul	Aug	Sep	Oct	Nov	Dec
# of Fires	29	51	104	65	45	57	83	49	47	35	36	31



Ellis  
**Fires by Cause Type**  
 2010 – 2019





# Appendix

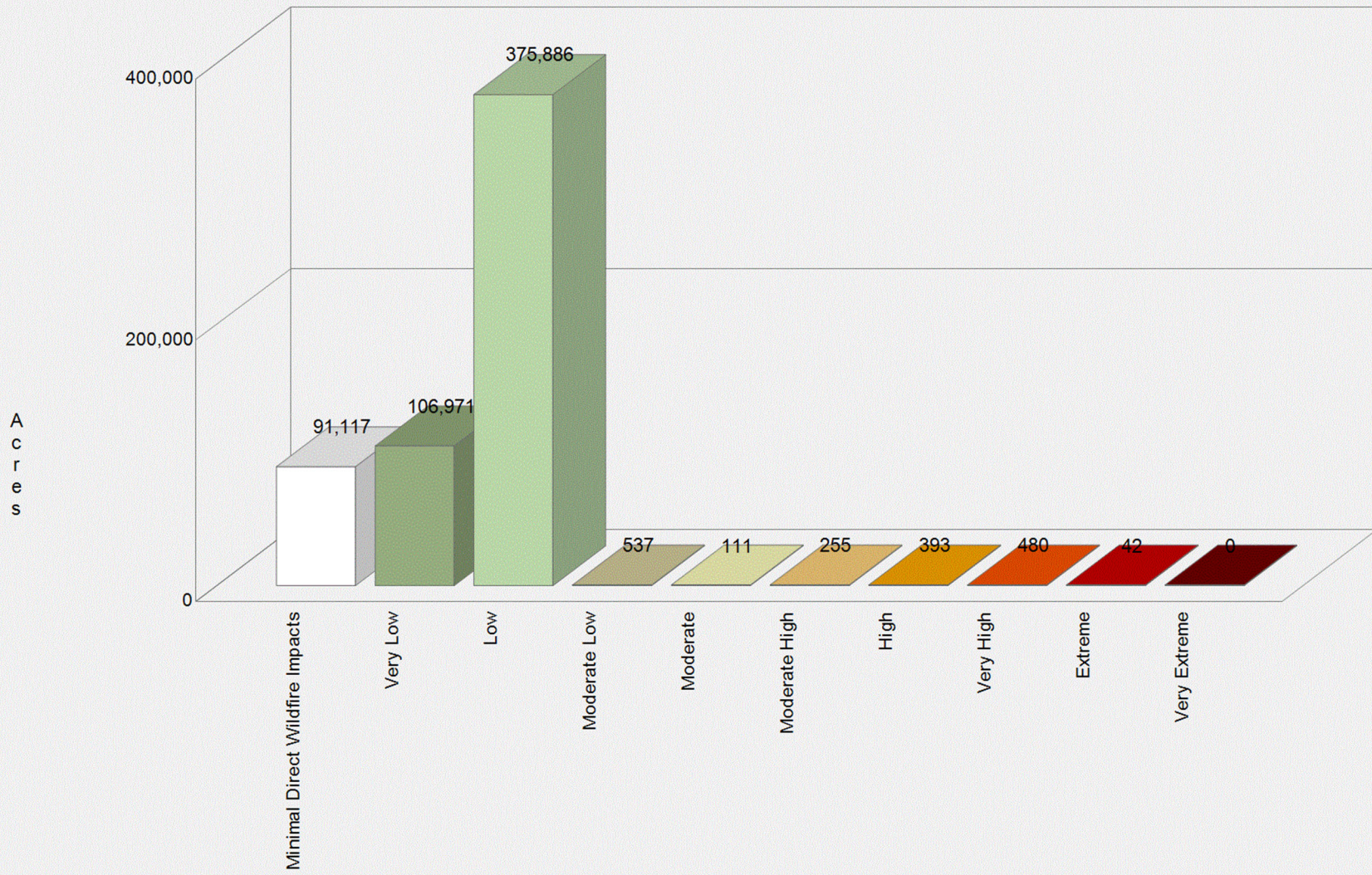
## Wildfire Threat

Wildfire Threat is a number closely related to the possibility of an acre burning shown in the Kansas Wildfire Risk Explorer by the Fire Threat.

	Wildfire Threat Category	Acres	Percent
	Minimal Direct Wildfire Impacts	91,117	15.8 %
	Very Low	106,971	18.6 %
	Low	375,886	65.3 %
	Moderate Low	537	0.1 %
	Moderate	111	0.0 %
	Moderate High	255	0.0 %
	High	393	0.1 %
	Very High	480	0.1 %
	Extreme	42	0.0 %
	Very Extreme	0	0.0 %
	<b>Total</b>	<b>575,792</b>	<b>100.0 %</b>



### Ellis Wildfire Threat





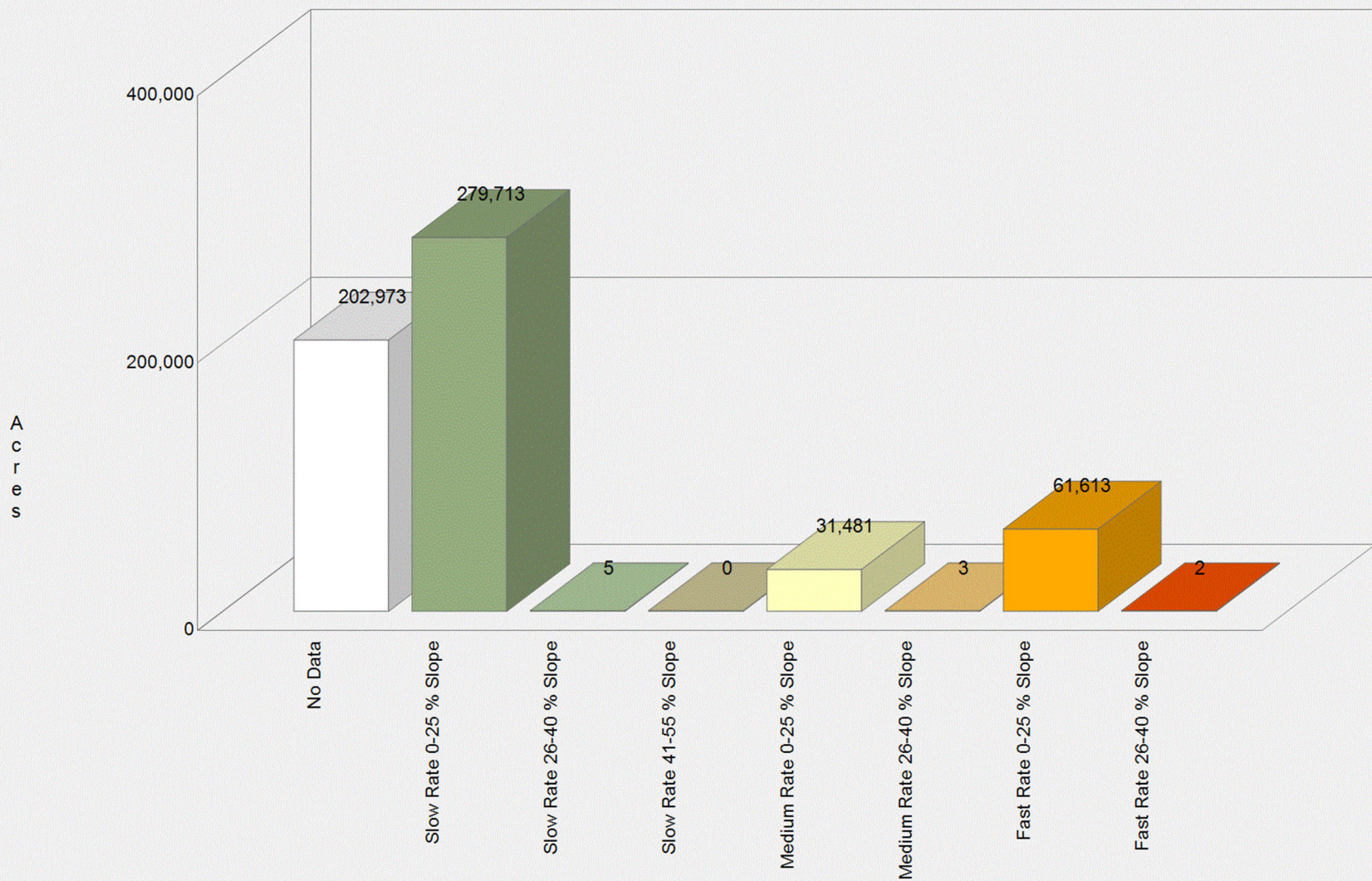
## Suppression Difficulty

The Suppression Difficulty data layer reflects the difficulty or relative cost to suppress a fire given the terrain and vegetation conditions.

	Suppression Difficulty Category	Acres	Percent
	No Data	202,973	35.3 %
	Slow Rate 0-25 % Slope	279,713	48.6 %
	Slow Rate 26-40 % Slope	5	0.0 %
	Slow Rate 41-55 % Slope	0	0.0 %
	Medium Rate 0-25 % Slope	31,481	5.5 %
	Medium Rate 26-40 % Slope	3	0.0 %
	Fast Rate 0-25 % Slope	61,613	10.7 %
	Fast Rate 26-40 % Slope	2	0.0 %
	<b>Total</b>	<b>575,790</b>	<b>100.0 %</b>



### Ellis Suppression Difficulty





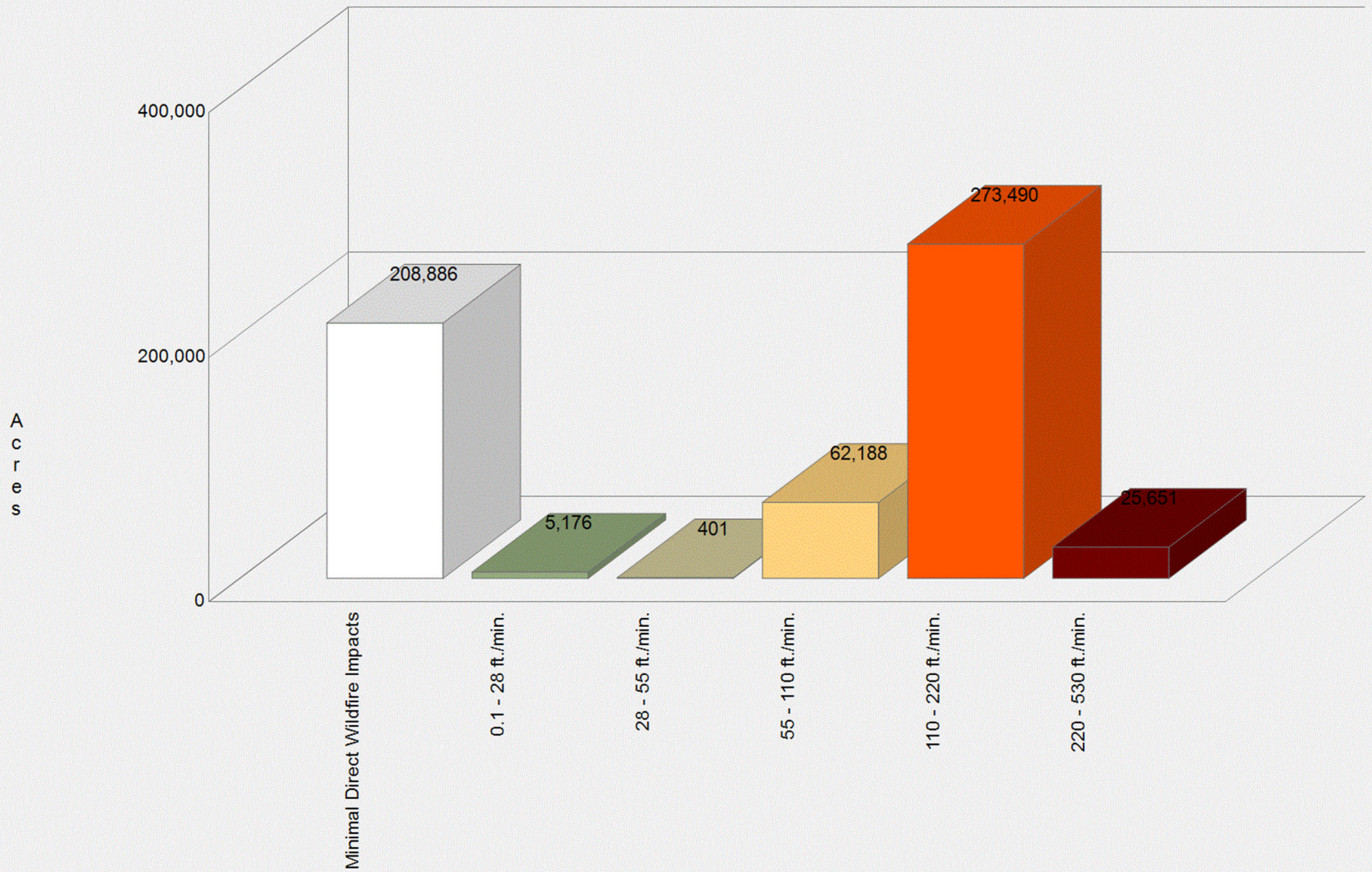
## Rate of Spread - Extreme

Extreme rate of spread is based on the Extreme Percentile Category which represents the 98 to 100 percentile weather conditions for fuel moisture and wind speed.

	Rate of Spread - Extreme Category	Acres	Percent
	Minimal Direct Wildfire Impacts	208,886	36.3 %
	0.1 - 28 ft./min.	5,176	0.9 %
	28 - 55 ft./min.	401	0.1 %
	55 - 110 ft./min.	62,188	10.8 %
	110 - 220 ft./min.	273,490	47.5 %
	220 - 530 ft./min.	25,651	4.5 %
	<b>Total</b>	<b>575,792</b>	<b>100.0 %</b>



### Ellis Rate of Spread





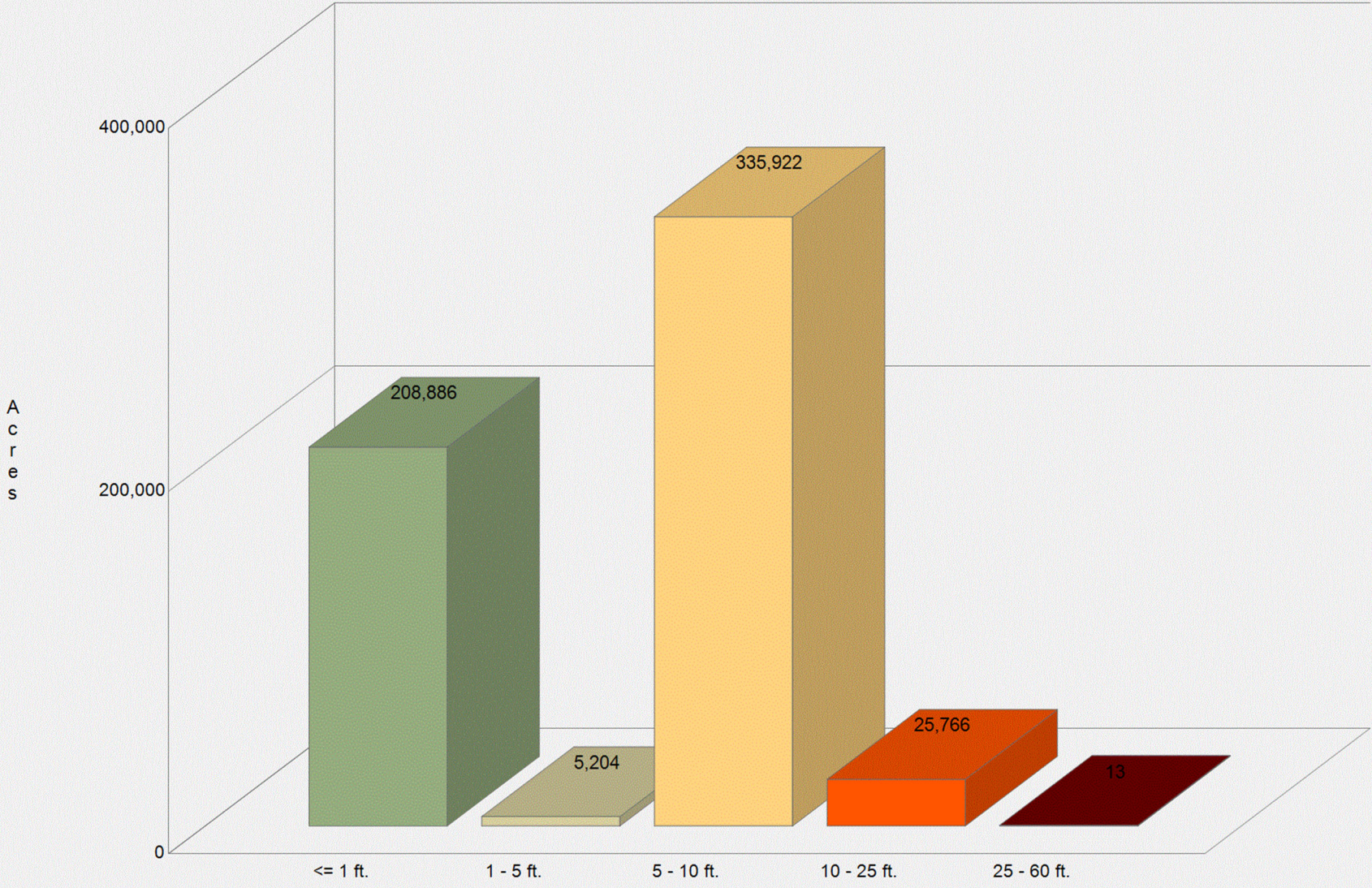
## Flame Length - Extreme

Extreme flame length is based on the Extreme Percentile Category which represents the 98 to 100 percentile weather conditions for fuel moisture and wind speed.

	Flame Length - Extreme Category	Acres	Percent
	<= 1 ft.	208,886	36.3 %
	1 - 5 ft.	5,204	0.9 %
	5 - 10 ft.	335,922	58.3 %
	10 - 25 ft.	25,766	4.5 %
	25 - 60 ft.	13	0.0 %
	<b>Total</b>	575,791	100.0 %



### Ellis Flame Length





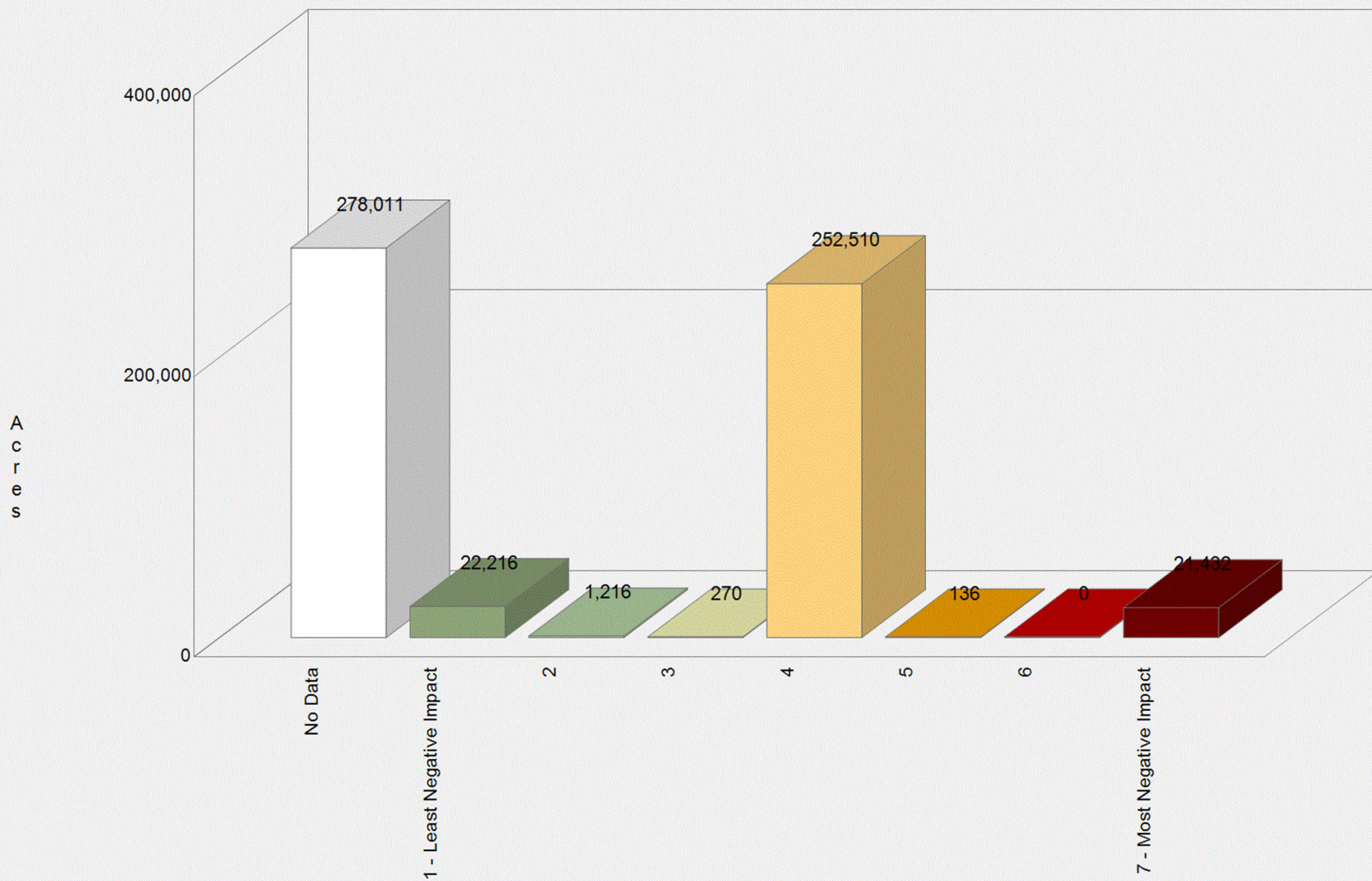
## Infrastructure Assets

The Infrastructure Assets Layer is created through the combination of known infrastructure locations such as schools, airports, hospitals, roads and railroads with Response Function Scores. Final values are based on a scale of 1 to 7 and were derived using Response Function Scores.

	Infrastructure Assets Category	Acres	Percent
	No Data	278,011	48.3 %
	1 - Least Negative Impact	22,216	3.9 %
	2	1,216	0.2 %
	3	270	0.0 %
	4	252,510	43.9 %
	5	136	0.0 %
	6	0	0.0 %
	7 - Most Negative Impact	21,432	3.7 %
	<b>Total</b>	<b>575,791</b>	<b>100.0 %</b>



### Ellis Infrastructure Assets





## **Area of Interest (AOI)**

- *Forest Action Plan Priority Areas intersecting AOI*

Nothing intersected.

- *Fire Districts intersecting AOI*

Brownell Fire District, Ellis County Fire District 1, Ellis Volunteer Fire Department, Hays Fire Department, Osborne County Rural Fire District #3, Plainville Fire Department, Rush County Fire District 5, Rush County Fire District 6, Rush County Fire District 7, Rush County Fire District 8, Russell County Fire District #1, Russell County Fire District #3, Trego County Fire Department

- *Notable Fire Perimeters intersecting AOI*

Codell, Four Counties, Gorham, Homestead, Ness/Ellis County, Oswald, Southern Russell Co.



## References

- Anderson, H. E. (1982). Aids to determining fuel models for estimating fire behavior. USDA For. Serv. Gen. Tech. Rep. INT-122. 22 p.
- Calkin, David E.; Ager, Alan A.; Gilbertson-Day, Julie, eds. 2010. Wildfire risk and hazard: procedures for the first approximation. Gen. Tech. Rep. RMRS-GTR-235. Fort Collins, CO: U.S. Department of Agriculture, Forest Service, Rocky Mountain Research Station. 62 p.
- Fire Program Solutions LLC. (2005). Users' Guide To Using the CrownMass® and Fuel Model Manager Programs. Retrieved from Fire Program Solutions: [http://www.fireps.com/software/ug\\_cm3.pdf](http://www.fireps.com/software/ug_cm3.pdf). 112 p.
- National Wildfire Coordinating Group (NWCG). (201408). Glossary of Wildland Fire Terminology. Publication Management System document PMS-205. 190 p.
- National Wildfire Coordinating Group (2004). Fireline Handbook. NWCG Handbook 3. PMS 410-1. NFES 0065. National Interagency Fire Center. Boise, Idaho 83705.
- Rothermel, R. C. 1972. A mathematical model for predicting fire spread in wildland fuels. USDA For. Serv. Res. Pap. INT-115, 40 p., illus.
- Scott, J. H., & Burgan, R. E. (2005). Standard Fire Behavior Fuel Models: A Comprehensive Set for Use with Rothermel's Surface Fire Spread Model. Ft. Collins, CO, Rocky Mountain Research Station: USDA Forest Service, Gen. Tech. Rpt. RMRS-GTR-153. 72 p.
- Scott, J. H., & Reinhardt, E. D. (2001). Assessing the Crown Fire Potential by Linking Models of Surface and Crown Fire Behavior. Ft. Collins, CO, Rocky Mountain Research Station: USDA Forest Service, Research Paper RMRS-RP-29. 59 p.
- West Wide Risk Assessment (2012)., Western Forestry Leadership Coalition (2012). West Wide Risk Assessment Final Report. Salem, OR. A final report developed by the WWA Technical Team documenting the methods and specifications of the WWA project. 105 p.
- Weidner, E., Todd, A. 2011. From the Forest to the Faucet: Drinking Water and Forests in the US, Methods Paper. USDA Forest Service.